



OUR MONTHLY QUILT TALK

Volume 32, No.12

Saline County Quilters Guild Newsletter

December 2015

Gwen Rogers, Editor

Website: www.quilttalk.org

Website host: Eddie Landreth

President's Message



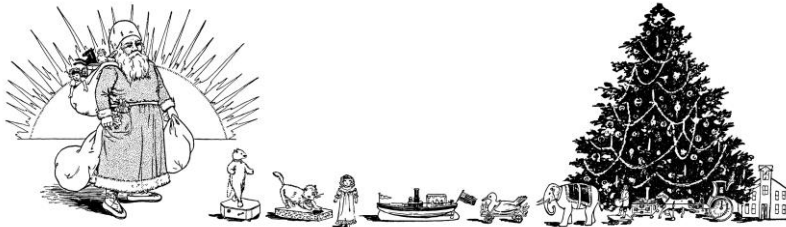
Hello fellow quilters!

Didn't you enjoy the presentations and stories behind the quilts from our own people? I did. We sure have a lot of talent in this group. I admittedly don't have the quilting talent and dedication a lot of you have – but nobody can best me when it comes to the enjoyment I get from trying! ☺

This is my favorite time of the year; it's right up there with Quiltmania time. I love the cool weather, the falling leaves, the smell of fireplaces in the air, and curling up with hot chocolate under a quilt in front of one of those aforementioned fireplaces. Is anything else as comforting? Hmm... You know what else is comforting? Knowing that my loved ones might be curling up under a quilt I made just for them. I hope they're reminded how much I love them every time they do, the same way I remember my grandmothers whenever I snuggle under quilts they made.

This is also the time of year when we're reminded how much we have to be thankful for: our faith, our country, our families, our friends, and so many blessings we could scarcely count them all if we tried. I'm thankful for you all. Every single one of you.

Happy Quilting,
Terri Dobbs



OFFICERS

President: Terri Dobbs

1st VP: Gwen Rogers

2nd VP: Eddie Landreth

Secretary: Cynthia McGear

Treasurer: Cathy Faulkner

December Birthdays

Happy Birthday!

14 Paulette Hutchings

15 Troyetta Wright

25 Norma Welch

26 Jane Hammonds

30 Beth Lane



COMMITTEE CHAIRPERSONS:

Professional workshop: Carol Smith

5:30 workshop: Cathy Faulkner

Saturday workshops: Cely Slover

Librarian: Sue Garrett

Fund raising & door prizes: Pat Wade, Jane Hammonds

Membership: Pat Wade

Program:

Website: Eddie Landreth

1st Wednesday: Dena Shaffer

Charity Quilts: Sidney Morris

Sunshine: Shirley Miller

Quiltmania: Lisa Martone, Linda Morgan

Newsletter: Gwen Rogers

Hostess: Beulah Wright

SUNSHINE REPORT: Do you know of someone who needs a sympathy or get well card? Please contact Shirley Miller and she will send a little sunshine their way. Email sfmiller37@aol.com or call 501-413-8175

Saline County Quilters Guild Meeting Minutes – November 16, 2015

The Saline County Quilters Guild met on Monday, November 16, 2015 at the Benton Senior Center in Benton Arkansas.

5:30 Workshop Program presented by Jane Hammonds
Create a paper covered notebook.

The meeting was called to order by President Terri Dobbs at 6:10 p.m. followed by the opening prayer by Beulah Wright.

Terri Dobbs Changes to October 2015 Minutes/None
Changes to October 2015 Treasurer's Report/ None

Committee Reports:

Gwen Rogers

Newsletter: Call for a new Newsletter editor. Gwen reported that Eddie Landreth has volunteered to accept the SCQG Newsletter Editor position. Cathy Faulkner will be responsible for mailing copies of the newsletter to members who do not have internet access. All other newsletter information will only be available on the SCQG website.

Quilts of Valor: Gwen reported information regarding three quilts of valor that were donated by our guild to Marti Rouby with Arkansas Quilts of Valor. She presented one quilt to a Navy veteran and the two smaller quilts will be given as door prizes at the Care Giver Support Conference Retreat on November 17th.

Pat Wade

Daytime Stitchers: No meeting will be held in November. Next meeting will be December 28th.

Membership: Reported a total of 27 members and 2 guests at tonight's meeting.

Dues: Reminder to pay your 2016 SCQG membership by the January meeting.

Christmas Gift Basket Giveaway: Reminder that tickets are available for purchase for the Christmas Gift Baskets that will be given away. Review the SCQG Newsletter for additional ways to earn tickets for the drawings. You may purchase tickets or earn tickets by bringing quests or completing quilting tasks. See the October newsletter on the website for additional details.

Cely Slover

Saturday Workshop: No workshop is scheduled for November. A workshop is scheduled December 5th at Herzfeld Library from 9-3. Pat Wade will be teaching covered pillows. Please bring 18" of fabric, a pillow form, sewing machine and thread. Pillows are available at Wal-Mart for \$3.00.

New Business

Terri Dobbs

Compliance Committee: Vote for new committee was held and passed. Pat Wade will be committee chair.

December Christmas Party: Reminder by Terri Dobbs that the meat and drinks will be provided by SCQG for the dinner but members are requested to bring side dishes and desserts to complete the meal. The December meeting will be the first meeting held at the new location at Calvary Baptist Church, 612 Valley View Road, Benton AR. Please enter at the rear of the building at 5:30.

There will be a gift exchange at the December meeting with a limit of \$10.00. If you would like to participate in the "Left/Right/ Center" games please bring three 2.5" strips the width of the fabric and three fat quarters.

HSV Christmas Auction: HSV Quilt Guild invites quilters to their December 10th meeting where an auction will be held from 10-12:00 at Faith Lutheran Church on Desoto Blvd. Auction for handmade items along with quilt related items will be held and refreshments provided.

Carriage House Quilt Retreat: Information was distributed regarding a new quilt retreat located near Mt. View AR.

Silent Auction: Please review the items available for sale tonight on the auction table and place your final bids.

5:30 Workshops

Myrna Yandell shared the plans for the 2016 5:30 workshops. Those who want to participate will be creating a different block each month that will start in January. The workshops will feature blocks from the book by Lori Holt called "Farm Girl Vintage" which can be purchased from Pinwheel Fabrics for \$30.00.

Door Prizes

Sidney Morris, Ola Bramlett, Myrna Yandell, Melissa Landreth and Sally Names.

Program

Guild members shared their personal quilts with interesting stories.

Show & Tell

Melissa Landreth, Cely Slover, Fay Poe, Helen Matthews, Marge Dixon, Sydney Morris and Ann Prince.

Meeting was adjourned.



DECEMBER CALENDAR of EVENTS



- 2 **First Wednesday Potluck** @ home of Shirley Miller (see directions below)
- 7 **Quiltaholics Anonymous** @ Saline County Library in Benton. Doors open at 9:00 am. Bring a project and lunch if you want to stay a while. Last chance to get help with your projects this year.
- 8 **Applique and whatever you want to work on** @ Sidney's Studio.
- 10 **Charity Quilts** @ Sidney's Studio *Come work on quilts to be given away.*
- 21 **SCQG Annual Christmas Potluck**---at Calvary Baptist Church
5:30 pm doors open
6:00 pm dinner
- 25 **Christmas Day** Merry Christmas to all
- 28 **Daytime Stitchers** @ Saline County Library. Doors open at 9:00 am. Bring a project, something for show-and-tell, and lunch if you want to stay a while.
- 31 New Year's Eve

FIRST WEDNESDAY POTLUCK

December 2 at the home of Shirley Miller: 1632 Matt Lane, Hensley, AR. The easiest route is via I-30E to I-530S to E Woodson Lateral Rd. in East End. Take Exit 12 from I-530S. After you take exit 12, turn right on Woodson Lateral road. When you get to Matt Lane, turn right and it's about ¼ mile on the right. The driveway is pretty long. The house is buff brick with dark brown trim. Parking is limited but my brother in law says we can use his property to park if needed.

SATURDAY WORKSHOP INFORMATION ~ Cely Slover

Well, here we are at the end of the year and new workshop classes will be held and announced hopefully in January, 2016.

For November and December, we will **not have classes at the library due to all the holidays.**

[Editor's note: please disregard information in the minutes about the December workshop at the library. Decision to cancel was made after the guild meeting.]

JOHNSTON'S
HOME CENTER

APPLIANCES • ELECTRONICS • SEWING MACHINES
BEDDING • VACUUMS

JOE JOHNSTON • ROBERT JOHNSTON
BILLIE JO COOPER

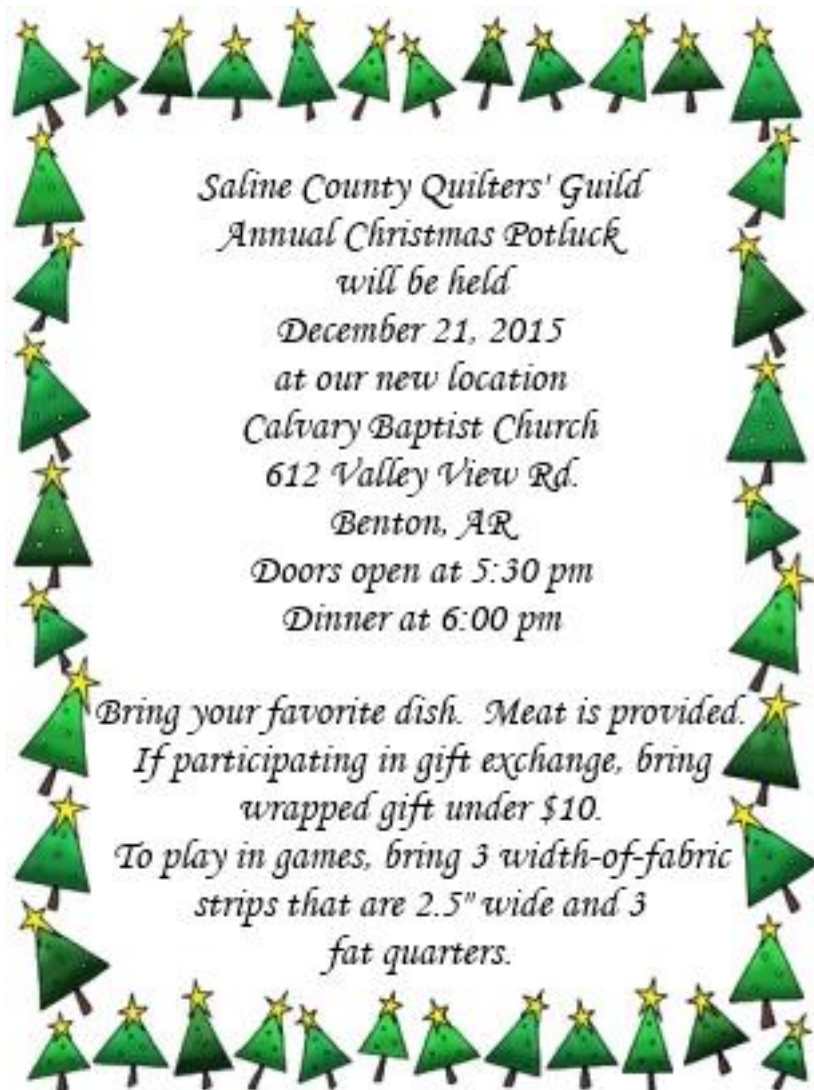
Repairs
All Makes & Models
Sales & Service

(501) 315-6697

1423 Military Road
Benton, AR 72015

Quiltsmith
Longarm Machine Quilting
Using
The Statler Stitcher
By Carol Smith

501-778-6354 Benton, AR



QUILT CHALLENGE

Deadline is December 21

(Fund Raising Committee challenge started in June)

1. Make a quilt from a magazine published in the 1980's or 1990's. You can pick up a magazine at a meeting. Look through the magazine and find something that inspires you to make today. It can be a quilt pattern or even an advertisement. It does not have to be identical to the one in the magazine, but the comparison must be recognizable.
2. Create a quilt.
3. The item must be completed, have three layers (top, batting, and backing) and sides 12" or greater.
4. Must be quilted and bound or framed.
5. Must be completed by the December 21st meeting.

Winners will be selected by popular vote and prizes will be awarded at the December 21st meeting. If you have questions or need a magazine, see Pat Wade.

WELCOME NEW MEMBERS:

Gloria Griffin and Marcia Bearden

We're glad you joined our group!



Announcing a new 5:30 Workshop beginning January 2016

Myrna Yandell will be facilitating our workshop and we will be using the book **Farm Girl Vintage** by Lori Holt of Bee in My Bonnet. More information about Lori Holt and her book can be found on her website: <http://beeinmybonnetco.blogspot.com/> Facebook has a closed group for **Bee in My Bonnet's Sew Alongs**, you just have to request to join. There are lots of good ideas from members. There are several video's on youtube

You will need to purchase the book for this workshop.

EXTRA, EXTRA: Pat Wade recommends exploring this website <http://www.freequiltpatterns.info/index.htm>. Be sure to check out Pat Sloan's new Block of the Month—My Secret Garden-- which begins in January. Supply list for the BOM is available now on her website: <http://blog.patsloan.com/>. You can sign up to receive email updates from her.

Treasurer's Report submitted by Cathy Faulkner

October 30, 2015 Treasurer's Report

Starting Balance Sept. 30, 2015	\$6,042.78	
	This Period	YTD
Quilt Talk Newsletter Ad	\$0.00	\$175.00
2015 Donation Quilt Tickets	\$527.00	\$1,016.00
Membership Dues	\$0.00	\$555.00
Door Prizes	\$0.00	\$7.00
Quilt Mania Misc	\$0.00	\$112.50
Silent Auction	\$0.00	\$131.00
Dawn Heese Classes/Kits	\$117.00	\$677.00
3/28 Workshop	\$0.00	\$30.00
Yard Sale Tables	\$0.00	\$55.00
Total Deposit	\$644.00	\$2,758.50

Checks/Debits	
Senior Adult Center - Rent	\$50.00
Ups Store - August Newsletter	\$35.31
Kay Skaggs - Cleaning	\$43.68
UPS Store - Sept. Newsletter	\$38.37
Total Disbursements	\$167.36

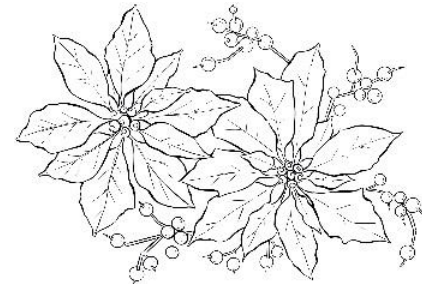
Ending Balance Oct. 30th \$6,519.42

WELCOME NEW OFFICERS

The following were voted into office at our November meeting.
Thank you for saying "Yes."

- President ~ Terri Dobbs
- 1st Vice President ~ Gwen Rogers
- 2nd Vice President ~ Judy Huggins
- Secretary ~ Ronda Honeycutt
- Treasurer ~ Cathy Faulkner

Members, please note: There are several committee chairs that need to be filled. Please say "Yes" when asked to fill these positions. We are looking forward to another great year.



Saline County Quilters' Guild 2016 Membership

Name _____ 2016 Dues \$20.00

Year you joined SCQG _____ Lifetime Member ____ Yes ____ No

Note: current members - only fill in information that has changed or needs corrected from last year.

Address _____ Email _____

city/state/zip _____ Month and Day of Birth _____

Home Phone () _____ Cell Phone () _____

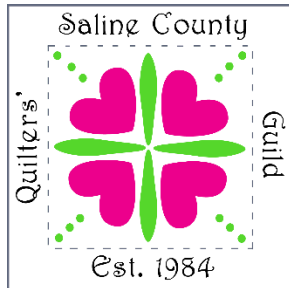
Lifetime members are those who have maintained their membership for a minimum of 10 years **and** have had 75th birthday before January 1, 2016.

For new members who join in Oct. Nov. or Dec., their membership will include the following year. Current Members can start renewing in November for the following year.

A new roster will be distributed at the March meeting.

Membership form can be mailed to Pat Wade, 8803 Amber Ln, Alexander, AR. 72002

SCQG Newsletter
c/o Gwen Rogers
2324 Holly Ridge Cove
Benton, AR 72019



ADDRESS CORRECTION
REQUESTED

QuiltCave Quilting By Tiffanee
Longarm Quilting

Tiffanee Noack
(501) 554-4511

quiltcavequilts@att.net
FaceBook: Quiltcave Quilting by Tiffanee
quiltcavequilting.blogspot.com

Arkansas Man Quilter
"Quilting With A Difference"
Eddie Landreth
2234 Irondale Drive
Benton, Arkansas 72019
(501) 326-8842
e-mail: elandreth@sbcglobal.net
web: arkansasmanquilter.blogspot.com

Quilting Fabrics---Gammill quilting machine
Authorized **Janome Dealer**



Pinwheel Fabrics
501 847-4177
Charlotte Williams
Owner
7915 Hwy 5 North - - - -Alexander, AR 72002
email-pinwheelfabric@sbcglobal.net www.pinwheelfabrics.com

the bed-warmer
Long-arm
Quilting

Shellie Blake
1312 River Oaks Drive
Benton, AR 72019
215-350-0873
shellieshouse@yahoo.com