

## Easy Pillowcase for standard size pillow

Cut the following: 27" x 42" for main body  
11" x 42" for cuff  
Optional: 2 1/2" x 42" for accent strip

1. Fold fabric for cuff in half lengthwise. Press (note: I baste raw edges together)
2. Optional: fold the accent strip in half lengthwise. Press. Align raw edges of accent strip and cuff. Baste together 1/8 inch from edges. Fig. 1
3. Pin the cuff to the right side of the main body fabric along the 42" edge with the raw edges aligned and (if use) the trim sandwiched in the middle. Stitch together. Press seam to main body. Fig. 2
4. Fold the pillowcase right sides together, matching the cuff seamline and lower edges. Stitch the raw edges together starting at the cuff. Fig 3

Note: for steps 3 and 4 use a serger or Zigzag edges.

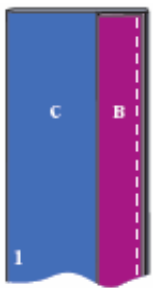


fig 1

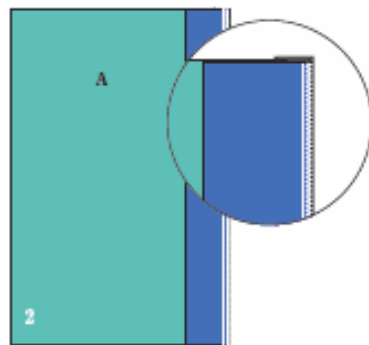


fig 2

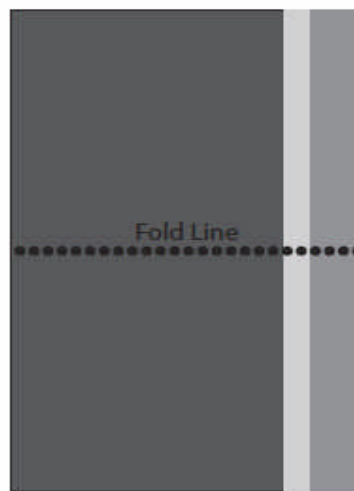


fig 3

